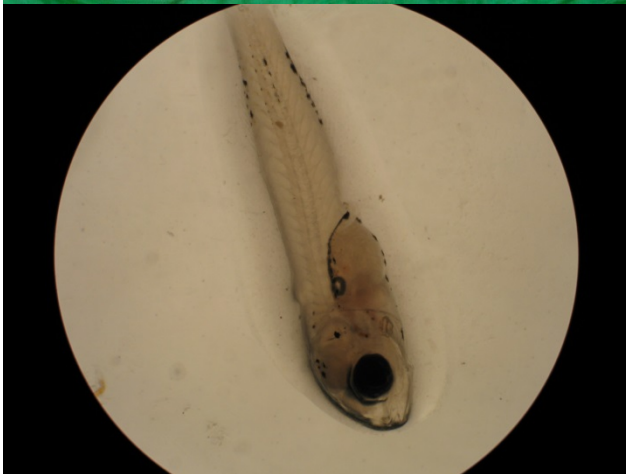


Fish health in Mediterranean Aquaculture, past mistakes and future challenges



Background

A significant production in European aquaculture consists of European Sea Bass and Gilthead Sea Bream. According to EAS data, approx. 135.000 Tons of Sea bass and 139.000 Tons of Sea bream were produced in 2012 in the Mediterranean Basin. Despite the relevance of these species, both in terms of production and economic value, no specific provision is given in the legislation regarding the survey of important diseases.

In this framework the information available about infectious diseases and priorities to further develop this production are quite fragmented and jeopardized. Since 2012 the EURL started a survey involving a number of private and institutional experts depicting the most important diseases in the Mediterranean.

Each year the data are compiled and presented at the EURL Annual Workshop. In 2015 it has been decided to organize a specific workshop within the EAFP conference that will be held in Gran Canaria 7 - 11 September. The final output of the Workshop is to write a paper ranking the most important infectious diseases in Mediterranean mariculture and to prioritize them according to the economic impact that they have on production.

The organizing committee consists of Niccoló Vendramin (niven@vet.dtu.dk) from EURL-European Union Reference laboratory for Fish Diseases, Dr. Dražen Oraić (oraic@irb.hr) and Dr. Snježana Zrnčić (zrnčić@irb.hr) CVI-Croatian Veterinary Institute in Zagreb and prof. Francesc Padròs (francesc.padròs@uab.cat) from UAB-University of Barcelona.

WS aim

The workshop will focus on the socio-economic impact of infectious diseases (including viral, bacterial and parasitic) for bass and bream production in the Mediterranean basin. The expected output of the WS will be an agreed document working as baseline for future initiative focusing on relevant diseases in the area.

This workshop aims to integrate the efforts and the knowledge already generated with other undergoing activities carried out by other organization (i.e. EATip, EAS and FEAP). For this reason we welcome inputs from all participants and wish fruitful collaboration with others association.

On beforehand, participants will be provided with a list of known and emerging pathogens. Participants will have to rank the 3 most important diseases for Gilthead Sea bream and the 3 most important for European Sea Bass detailing the reason/background behind this choice.

The criteria that should guide the ranking of the different diseases should focus and rely on the reduction of income that a single disease, or a complex of diseases, determines on the expected production programme.

WS Organization

The WS will start with 20 min introduction explaining the goal of the WS and working procedure.

Then participants will be divided into groups (according to geographic area: West Med, North Med, East Med and Northern Africa). Each group will have a chairman/facilitator and the discussion will be done in order to find a common agreement for the most important diseases in the area describing the background and potential gaps in the disease management. These discussions will last for approximately 40 minutes.

Each group will appoint a representative that will use 8-10 min to present the outputs of the discussions in plenary.

The last 40 min will be devoted to discuss the outputs of each group and finalize the results of the WS.

NB. The workshop is open, but participants are suggested to contact the organizing committee on beforehand at niven@vet.dtu.dk.